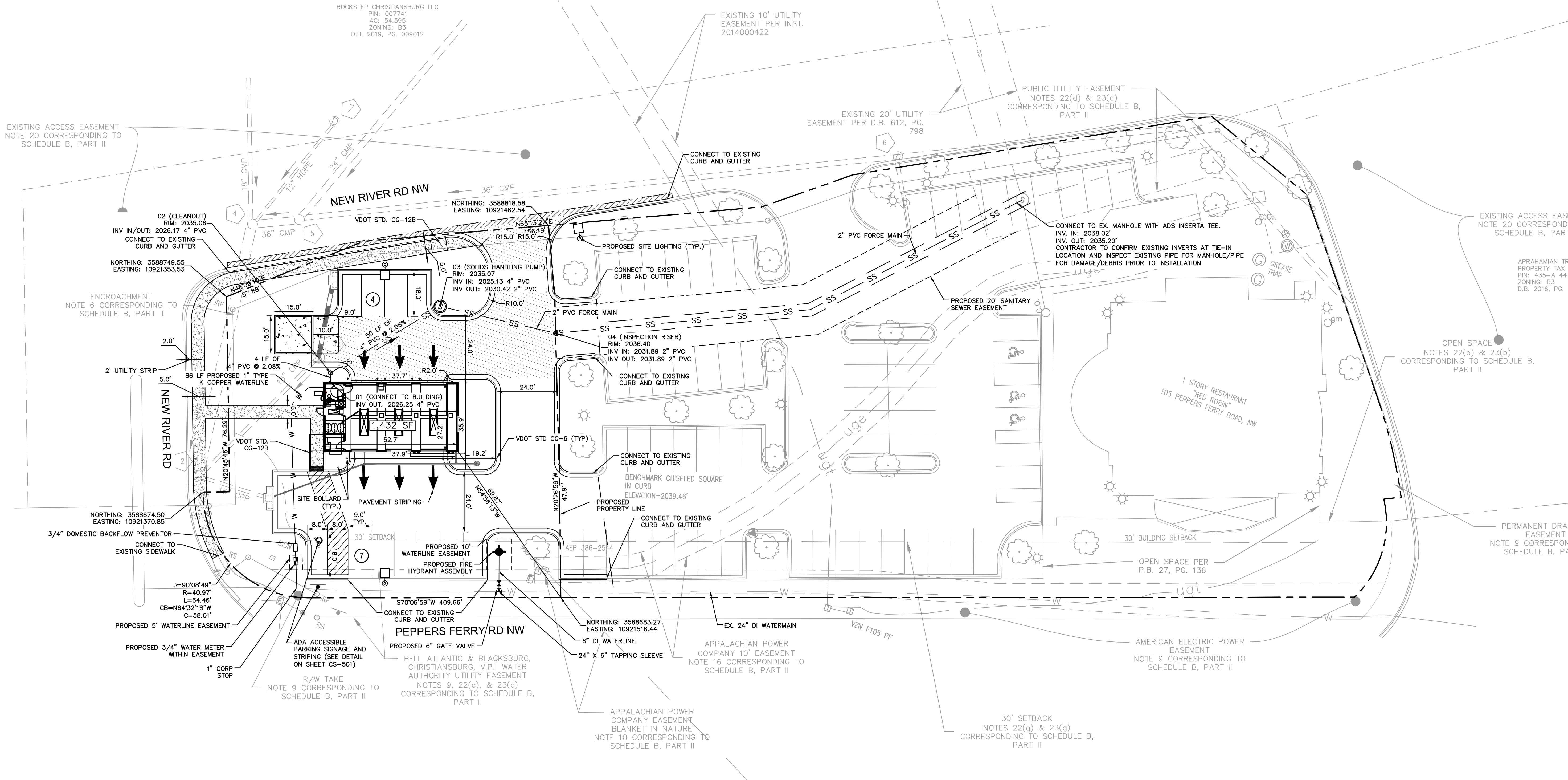


Plotted By: Parakk, Shelley - Sheet Set: Site & Utility Plan - November 03, 2021 12:04:52pm - 4: NRIC-DVA113418 - Take 5:007 - Peppers Ferry Road - Christiansburg, VA - PlanSheets: CS-101 SITE & UTILITY PLAN.dwg
 This document, together with the concepts and designs presented herein, as an instrument of service, is intended only for the specific purpose and client for which it was prepared. Reuse of and improper reliance on this document without written authorization and adaptation by Kimley-Horn and Associates, Inc. shall be without liability to Kimley-Horn and Associates, Inc.

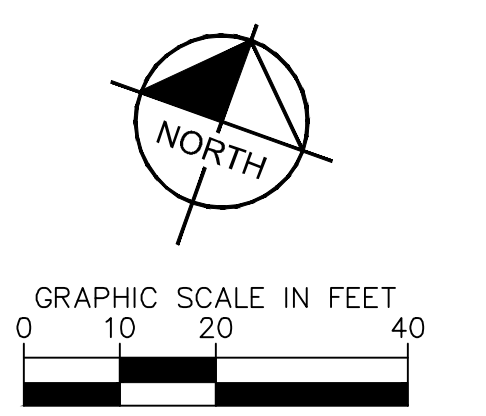


SITE AND UTILITY NOTES

1. ALL CURB RADII ARE 5.0' UNLESS OTHERWISE NOTED.
2. ALL DIMENSIONS ARE TO FACE OF CURB UNLESS OTHERWISE NOTED.
3. THE CONTRACTOR IS RESPONSIBLE FOR INSTALLING ALL STOP SIGNS, DIRECTIONAL SIGNS, AND STRIPING SHOWN ON THE PLANS.
4. REFER TO SHEETS CS-501 AND CS-502 FOR DETAILS.
5. TWO COATS OF TRAFFIC PAINT SHALL BE SUPPLIED FOR ALL PAVEMENT STRIPING.
6. REFER TO FINAL GEOTECHNICAL REPORT FOR FINAL PAVEMENT SECTIONS.
7. ALL PROPOSED UTILITIES ARE TO BE INSTALLED UNDERGROUND INCLUDING ELECTRIC, TELEPHONE AND CATV IF NECESSARY. WATER, SANITARY SEWER AND SPRINKLER SYSTEM WILL BE CONNECTED TO EXISTING BUILDING. REFER TO ARCHITECTURAL PLANS FOR DETAILS.
8. PROTECT AND MAINTAIN MINIMUM COVER FOR ALL EXISTING UTILITIES DURING CONSTRUCTION AT ALL TIMES.
9. THERE ARE NO SERVICE BAY FLOOR DRAINS.
10. FIRE LANE SIGNS TO BE PLACED NO FURTHER THAN 3 FEET FROM THE PAVEMENT AND PLACED SO THAT THE BOTTOM OF THE SIGN IS 7 FEET FROM THE PAVEMENT.

SITE LEGEND

LIGHT DUTY PAVEMENT SEE SECTION ON SHEET CS-501	
HEAVY DUTY PAVEMENT SEE SECTION ON SHEET CS-501	
CONCRETE SIDEWALK SEE DETAIL ON SHEET CS-501	
HEAVY DUTY CONCRETE SEE SECTION ON SHEET CS-501	
2" MILL AND REPLACE SEE DETAIL ON SHEET CS-501	
VDOT STD. CG-6	



APPROVAL BLOCK

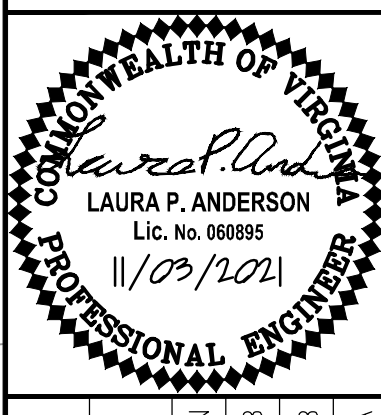
APPROVED: ENGINEERING _____ DATE _____

APPROVED: PLANNING _____ DATE _____

No.	REVISIONS	DATE	BY

Kimley»Horn

© 2021 KIMLEY-HORN AND ASSOCIATES, INC.
 1700 WILLOW LAWN DR., SUITE 200, RICHMOND, VA 23230
 PHONE: 804-673-3882
 WWW.KIMLEY-HORN.COM



KHA PROJECT	113418009
DATE	11/03/2021
SCALE	AS SHOWN
DESIGNED BY	MFB
DRAWN BY	MFB
CHECKED BY	LPA

SITE & UTILITY PLAN

TAKE 5
PEPPERS FERRY RD
 PREPARED FOR
EB PARTNERS LLC
 CITY OF CHRISTIANSBURG, VA

SHEET NUMBER
CS-101