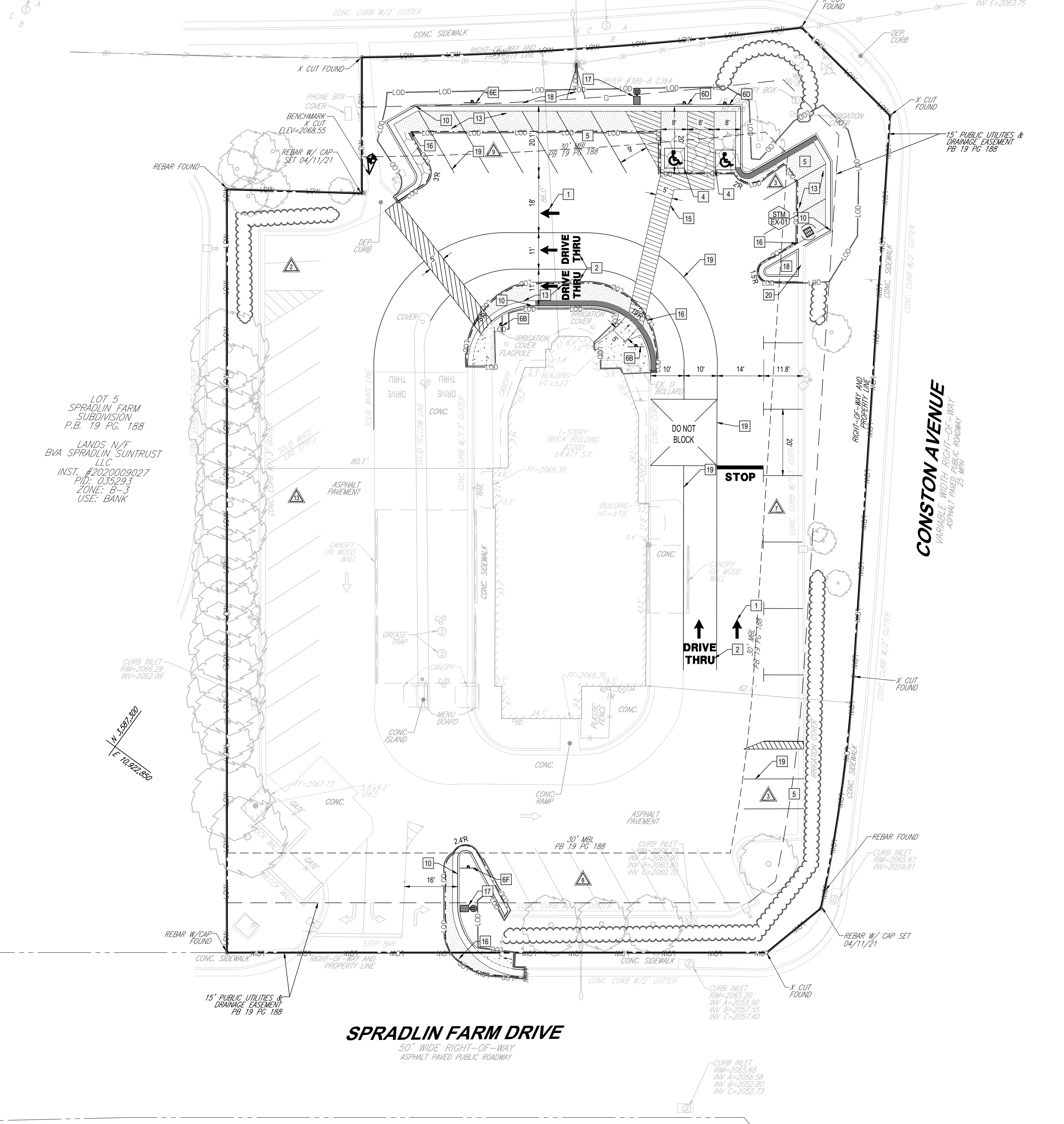


SAN. MH
 TBM=2068.47
 INV. A=2068.82
 INV. B=2066.42
 INV. C=2058.72

SAN. MH
 TBM=2068.68
 INV. A=2068.88
 INV. B=2066.48
 INV. C=2058.78

SAN. MH
 TBM=2070.40
 INV. A=2071.59
 INV. B=2069.19
 INV. C=2061.59
 INV. D=2053.99
 INV. E=2063.75



LOT 5
 SPRADLIN FARM
 SUBDIVISION
 P.B. 19 PG. 188

LANDS N/F
 BVA SPRADLIN SUNTRUST
 LLC
 INST. #2020009027
 P.O. 035293
 ZONE: B-3
 USE: BANK

SPRADLIN FARM DRIVE
 50' WIDE RIGHT-OF-WAY
 ASPHALT PAVED PUBLIC ROADWAY

CONSTON AVENUE
 VARIABLE WIDTH PUBLIC ROADWAY
 ASPHALT PAVED PUBLIC ROADWAY
 25' WIDE

SITE PLAN DESIGN NOTES & KEY PLAN

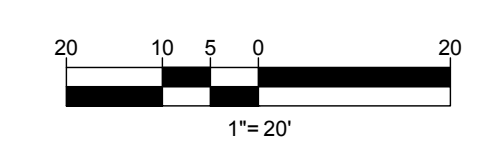
- 1 DIRECTIONAL GRAPHIC (C-4.0)
- 1A MULTI-LANE MERGE ARROW
- 2 DRIVE-THRU GRAPHIC (C-2.0)
- NOT USED 3 STOP-LINE GRAPHIC (C-3.0)
- 4 PAINTED HANDICAP PARKING SYMBOL (C-4.0)
- 5 STANDARD PARKING STALL (TYP) (C-5.0)
- 6 DIRECTIONAL SIGNAGE (C-6.0)
- ALL SIGNS MUST CONFORM TO MUTCD LATEST VERSION
- 6A "STOP" SIGN
- 6B "PEDESTRIAN CROSSING" SIGN
- 6C "DO NOT ENTER" SIGN
- 6D HANDICAP SIGN (HC-10 DETAIL)
- 6E CURBSIDE ORDER SIGN
- 6F "DRIVE THRU" SIGN
- NOT USED 7 WHEEL-STOP (C-7.1)
- NOT USED 8 EMPLOYEE RAMP (10% MAX SLOPE) (C-8.1)
- 9 TYPICAL SIDEWALK (C-9.1)
- 10 18" CURB AND GUTTER - CATCHING (C-10.1)
- 10 18" CURB AND GUTTER - SPILLING (C-10.2)
- NOT USED 11 ROLLOVER MOUNTABLE CURB (C-11.1)
- NOT USED 12 BOLLARD (C-12.1)
- 13 TYPICAL ASPHALT PAVEMENT SECTION (C-13.1)
- 14 PAVEMENT EDGE (C-14.1)
- 15 CROSSWALK DETAIL (C-15.1)
- 16 SAWCUT
- 17 RELOCATED SITE LIGHT (24' TALL) (SEE NOTE 5, THIS SHEET)
- 18 LANDSCAPED AREA
- 19 4" WIDE WHITE STRIPE
- 20 2' FLUME

SITE PLAN NOTES:

1. CONTRACTOR TO PROVIDE MINIMUM PAVEMENT SECTION (OR MATCH EXISTING WHICHEVER IS GREATER) AND MATCH EXISTING CROSS-SLOPES IF ASPHALT PATCHING IS REQUIRED. SEE PAVEMENT DETAILS.
2. CONTRACTOR SHALL REFER TO ARCHITECT PLANS FOR THE EXACT DIMENSIONS OF THE BUILDING AND THE LOCATION OF DOORWAYS, UTILITIES, ETC.
3. CONTRACTOR SHALL INSTALL NECESSARY TRAFFIC CONTROL, SAFETY BARRICADES, LIGHTING, AND OTHER REQUIRED CONTROL MEASURES TO SECURE THE WORK AREA FROM EXISTING TRAFFIC AND TO ENSURE PUBLIC SAFETY.
4. CONTRACTOR SHALL INSTALL EXPANSION JOINT BETWEEN ALL CONCRETE PAVEMENT INTERFACE WITH BUILDINGS, CURB & GUTTER, AND OTHER CONSTRAINED OBJECTS.
5. CONTRACTOR TO MATCH EXISTING POLE BASE, DESIGN, AND BOLT PATTERN.

LEGEND

EXISTING	CONCRETE CURB & GUTTER	CONCRETE CURB & GUTTER	PROPOSED
	TYP. SIGN	DEPRESSED CURB	
		PROP CONCRETE SIDEWALK	
		PROP CONCRETE	
		PROP ASPHALT (FULL DEPTH SECTION)	
		PROP SAWCUT	
	LIMITS OF WORK	LOW-LOW	
	LIMIT OF DISTURBANCE	LOD-LOD	



2200 Burlington Rd
 Atlanta Georgia, 30349-2998

811
 Know what's below.
 Call before you dig.
 ALWAYS CALL 811
 It's fast. It's free. It's the law.

REVISIONS:

MARK	DATE	BY
1	06/25/2021	GMJ

TOWN COMMENTS

MARK	DATE	BY
△		

MARK	DATE	BY
△		

COMMONWEALTH OF VIRGINIA
 JOHN C. WRIGHT
 Lic. No. 046960
 6/25/2021
 PROFESSIONAL ENGINEER

BOHLER
 SITE CIVIL AND CONSULTING ENGINEERING
 PROGRAM MANAGEMENT
 LANDSCAPE ARCHITECTURE
 PERMITTING SERVICES
 TRANSPORTATION SERVICES

BOHLER
 28 BLACKWELL PARK LANE, SUITE 201
 WARRENTON, VIRGINIA 20186
 Phone: (540) 349-8500
 Fax: (540) 349-8381
 VA@BohlerEng.com

STORE
 SERIES 08 - #1151
 CHRISTIANSBURG
 2200 N FRANKLIN ST
 CHRISTIANSBURG, VA
 24073

SHEET TITLE
SITE PLAN

DWG EDITION **02.4**

- PRELIMINARY
- 80% SUBMITTAL
- FOR CONSTRUCTION

JOB NO. : V216500
 STORE : #1151
 DATE : 05/12/2021
 DRAWN BY : DSH
 CHECKED BY : SFS
 CAD ID : SITE-0

SHEET
C-2.0

APPROVED: Engineering _____ Date _____

APPROVED: Planning _____ Date _____