

parker
DESIGN GROUP
2122 Carolina Ave. SW
Roanoke, VA 24014
Ph: 540-387-1153
Fax: 540-389-5767
1915-B W. Cary Street
Richmond, VA 23220
Phone: 804-358-2947
Fax: 804-359-9645
www.parkerdg.com

These documents are the property of Parker Design Group (PDG) and may not be reproduced or used without the express permission of PDG. Any reuse of these documents without authorization of PDG will be at the sole risk of the individual or entity utilizing said documents.



Rec Pond Design

The Reserve at Round Meadows

Town of Christiansburg, Virginia

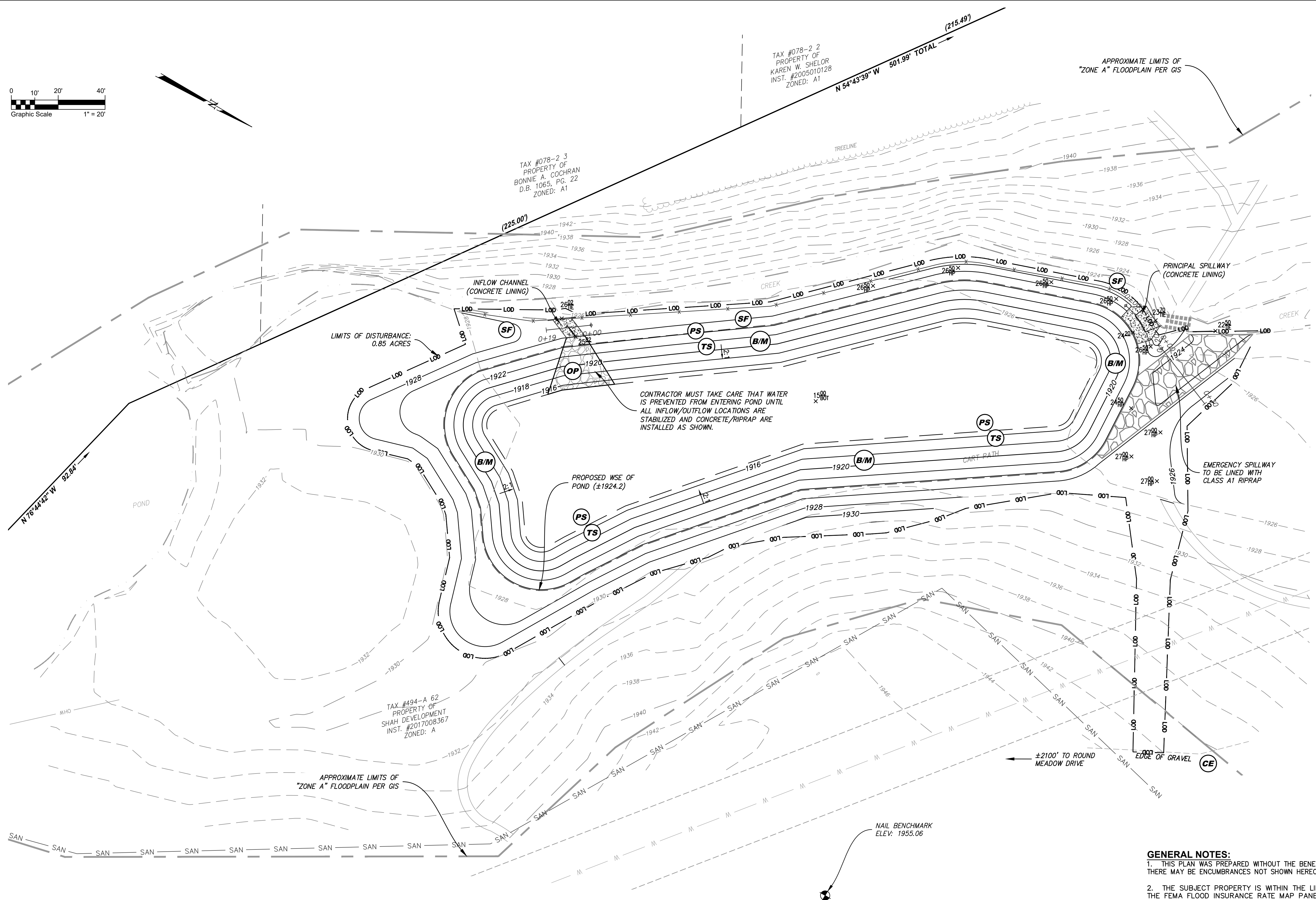
REVISIONS:

TOC Comments - October 1, 2019
TOC Comments - May 20, 2021

DESIGNED BY: PDG
DRAWN BY: JLK
CHECKED BY: SLR

DATE:
1 August 2019
SHEET TITLE:
POND GRADING PLAN
SCALE:
1" = 20'
SHEET NO.

C04

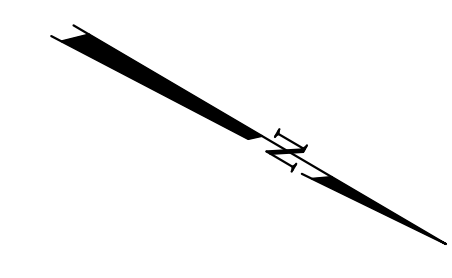
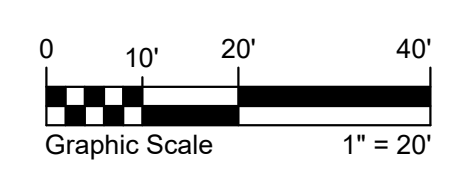


POND EARTHWORK ESTIMATE:
CUT: 8683 C.Y.
FILL: 48 C.Y.
NET: 8637 C.Y. (CUT)

POND EARTHWORK TO WSEL:
CUT: 2985 C.Y.
FILL: 54 C.Y.
NET: 2931 C.Y. (CUT)

- EROSION AND SEDIMENT CONTROL MEASURES:**
PROVIDE THE FOLLOWING:
- (CE) CONSTRUCTION ENTRANCE MEETING VA ESCH STD. & SPEC. 3.02
 - (SF) SILT FENCE MEETING VA ESCH STD. & SPEC. 3.05
 - (OP) OUTLET PROTECTION MEETING VA ESCH STD. & SPEC. 3.18
 - (TS) TEMPORARY SEEDING MEETING VA ESCH STD. & SPEC. 3.31
 - (PS) PERMANENT SEEDING MEETING VA ESCH STD. & SPEC. 3.32
 - (B/M) BLANKETS & MATTING MEETING VA ESCH STD. & SPEC. 3.36

- GENERAL NOTES:**
- THIS PLAN WAS PREPARED WITHOUT THE BENEFIT OF A TITLE REPORT. THEREFORE THERE MAY BE ENCUMBRANCES NOT SHOWN HEREON.
 - THE SUBJECT PROPERTY IS WITHIN THE LIMITS OF ZONE "A" AS SHOWN ON THE FEMA FLOOD INSURANCE RATE MAP PANEL NO. 51121C0140C, EFFECTIVE DATE SEPTEMBER 25, 2009. THIS DETERMINATION IS BASED ON SAID MAP AND HAS NOT BEEN VERIFIED BY ACTUAL FIELD ELEVATIONS.
 - THE PLAN WAS PREPARED FROM A PARTIAL FIELD SURVEY BY PARKER DESIGN GROUP. THIS PARTIAL TOPOGRAPHIC SURVEY WAS COMPLETED UNDER THE DIRECT AND RESPONSIBLE CHARGE OF ALAN CLEMONS, L.S. FROM AN ACTUAL GROUND SURVEY MADE UNDER HIS SUPERVISION; THAT THE IMAGERY AND/OR ORIGINAL DATA WAS OBTAINED MAY 31, 2019, AND THAT THIS PLAT, MAP OR DIGITAL GEOSPATIAL DATA INCLUDING METADATA MEETS THE MINIMUM ACCURACY STANDARDS UNLESS OTHERWISE NOTED.
 - THE LOCATION OF EXISTING UNDERGROUND UTILITIES IS BASED UPON AVAILABLE PLANS AND RECORDS (DESIGNED BY OTHERS). THE LOCATIONS SHOWN SHOULD BE CONSIDERED APPROXIMATE. THERE MAY BE UTILITIES WHICH AFFECT THE PROPERTY NOT SHOWN HEREON. CONTRACTOR SHALL CALL "MISS UTILITY" TO VERIFY LOCATION OF ANY UNDERGROUND UTILITIES PRIOR TO ANY CONSTRUCTION.
 - ELEVATIONS SHOWN ARE ON NAVD '88 DATUM, ESTABLISHED BY ONE (1) GPS POINT SHOWN, AND ELEVATION DIFFERENCE VERIFIED IN THE FIELD. EXISTING CONTOURS SHOWN ARE AT 2.0' INTERVALS.



APPROVED: Engineering _____ Date _____

APPROVED: Planning _____ Date _____

S:\2019 Projects\19-0103 Shelor Pond\6 DWG\Active Engineering Production\19-0103 Grading.dwg, 5/21/2021 3:33:26 PM, AutoCAD PDF (General Documentation).pc3