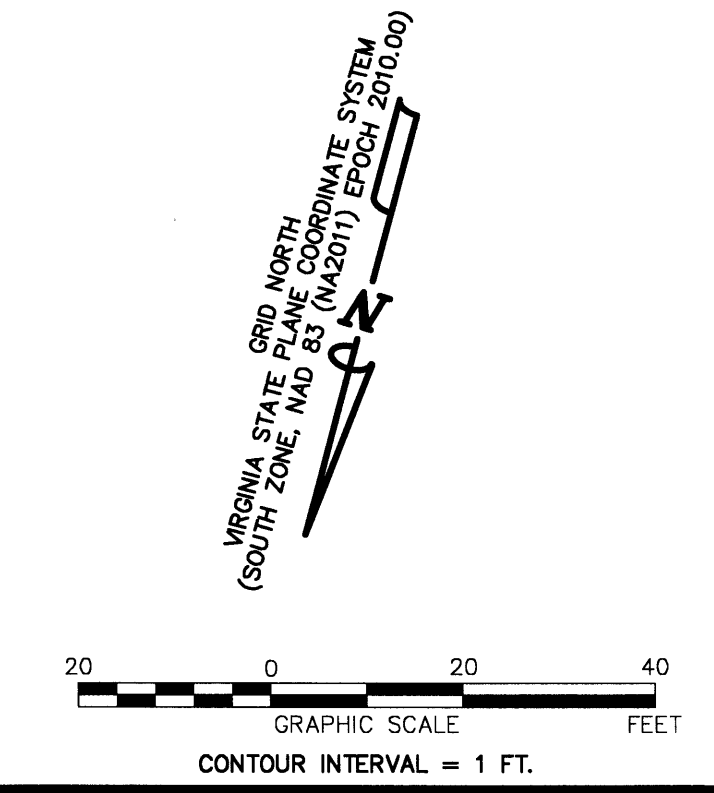
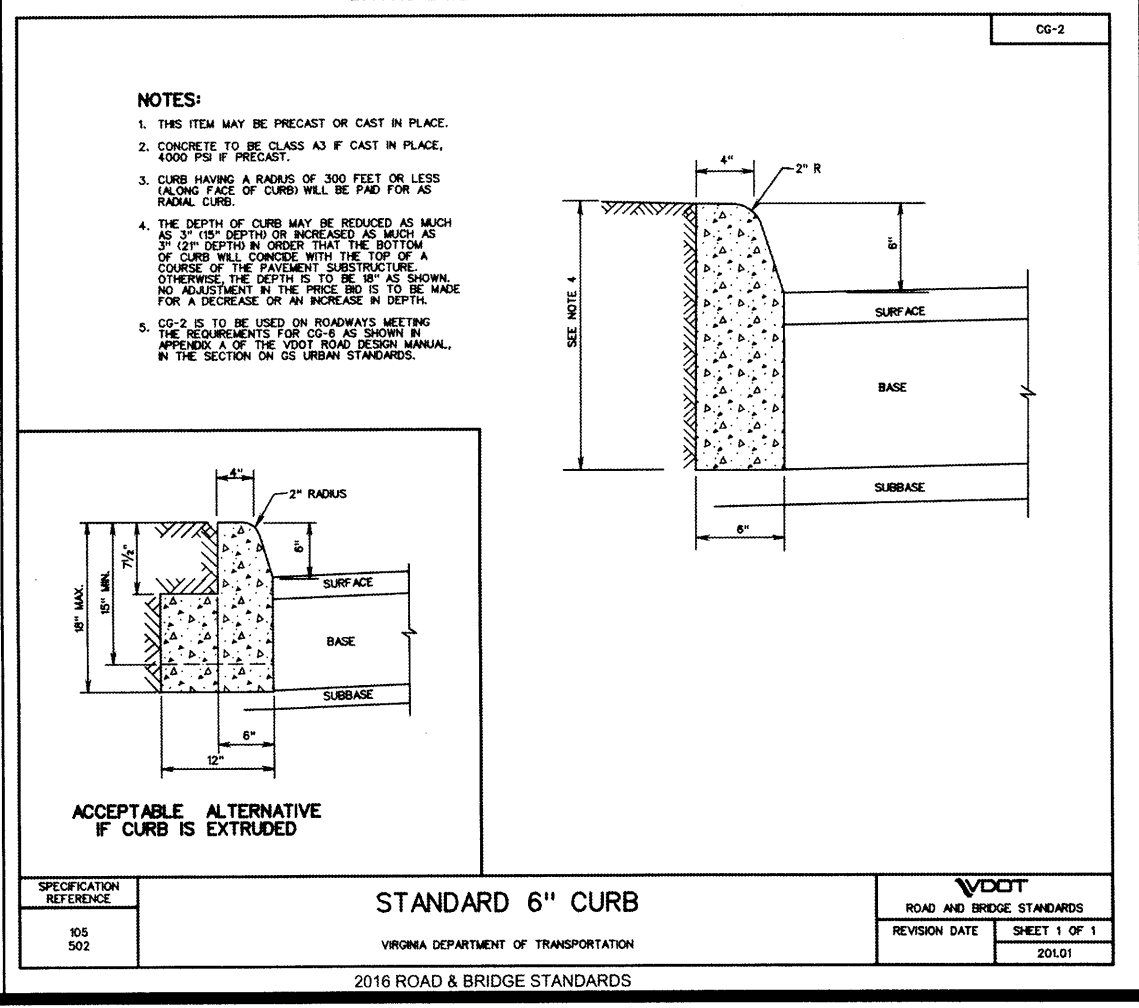
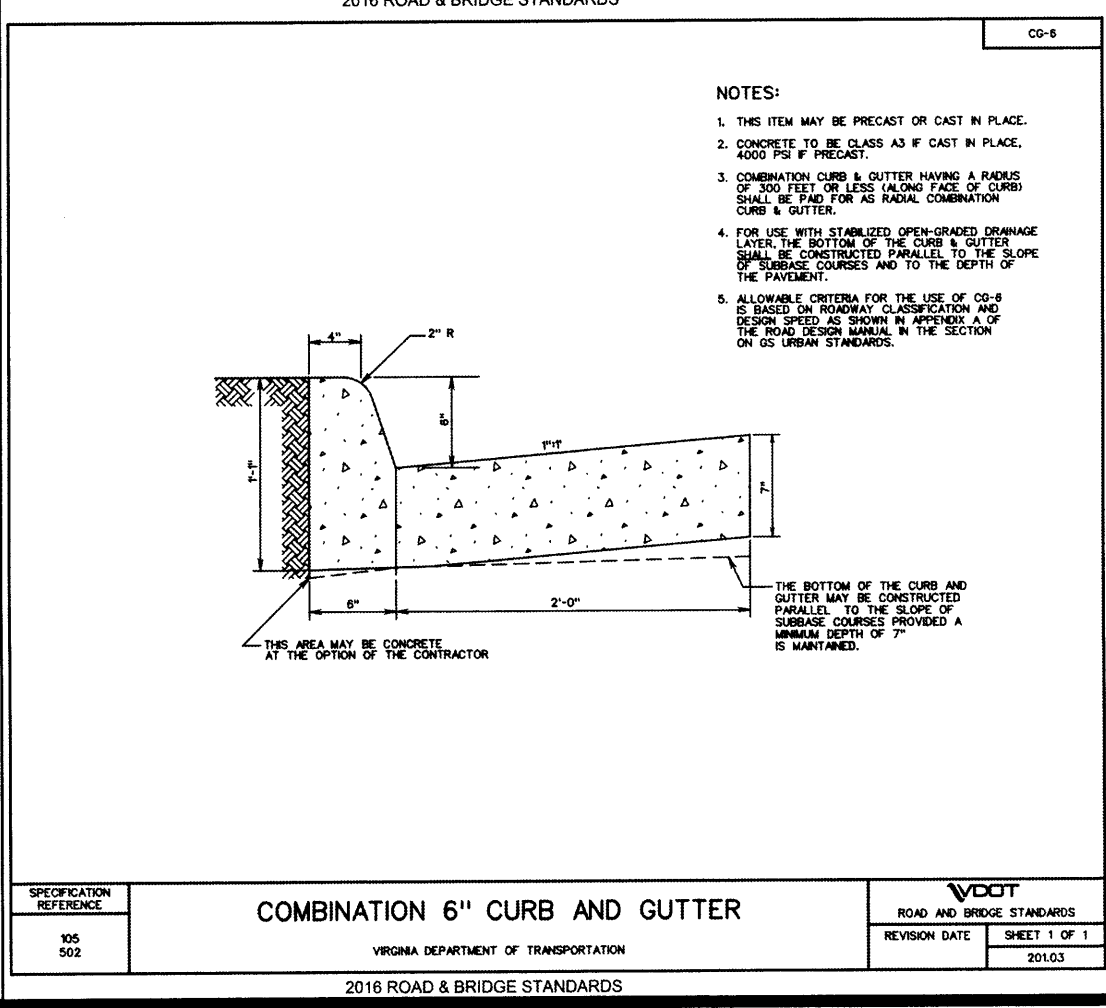
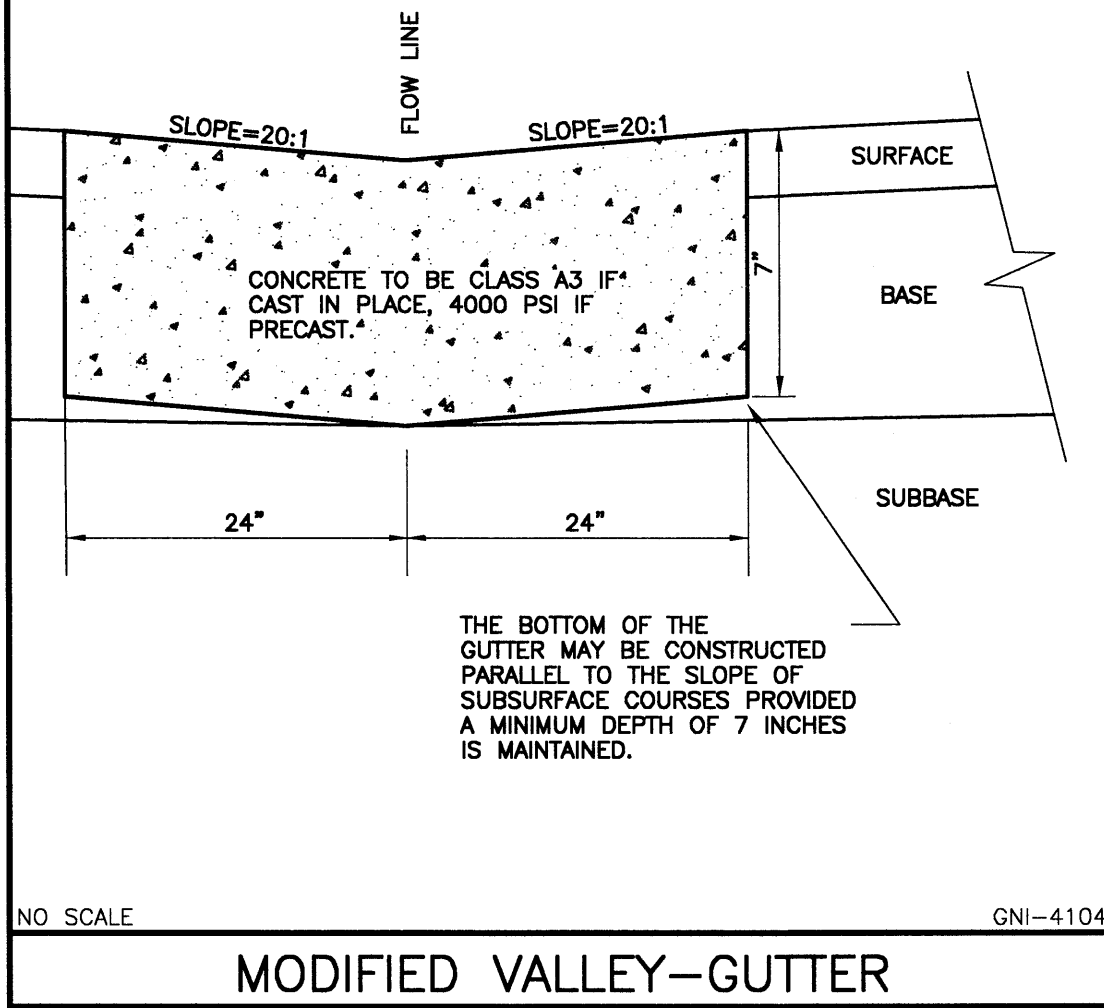
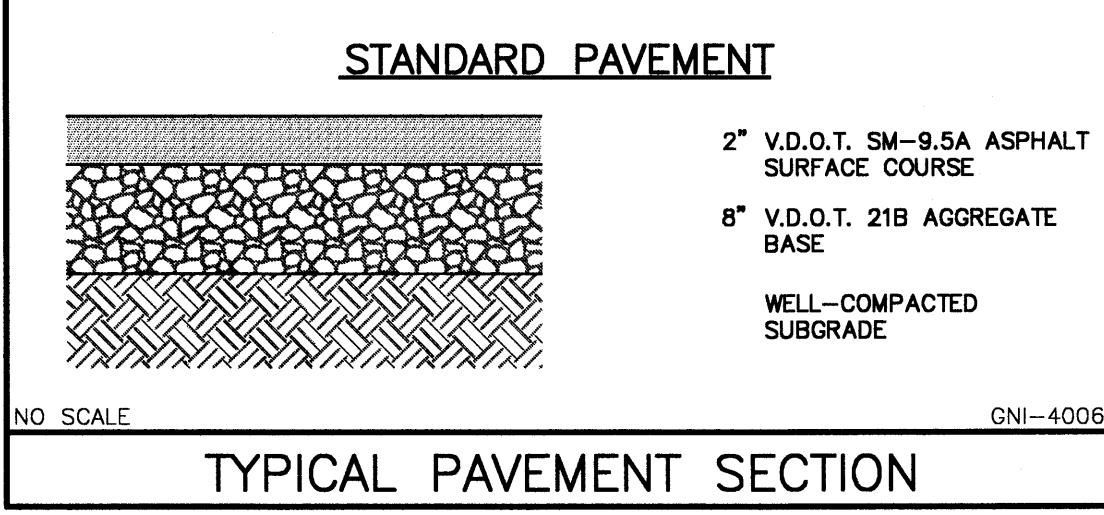
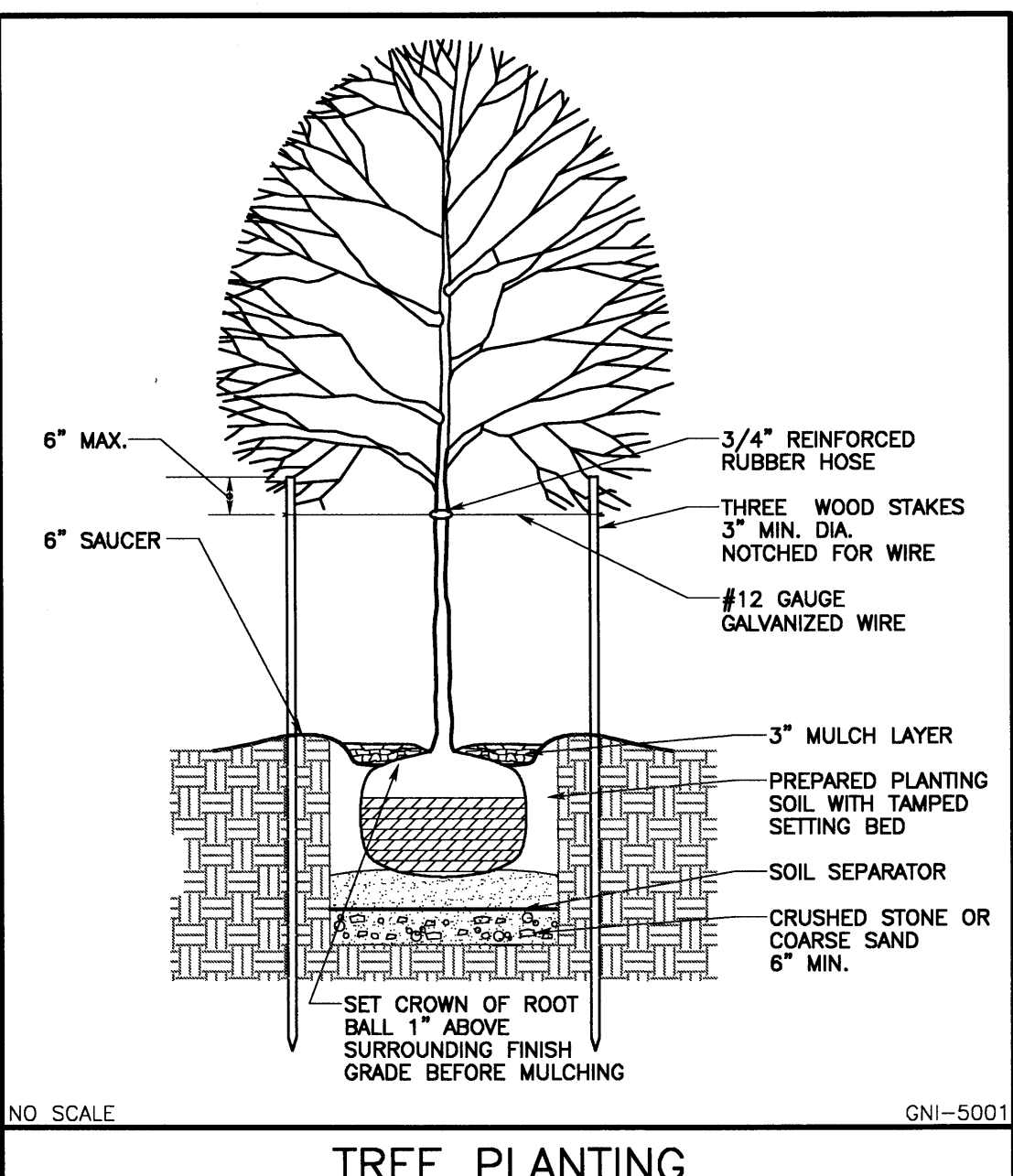
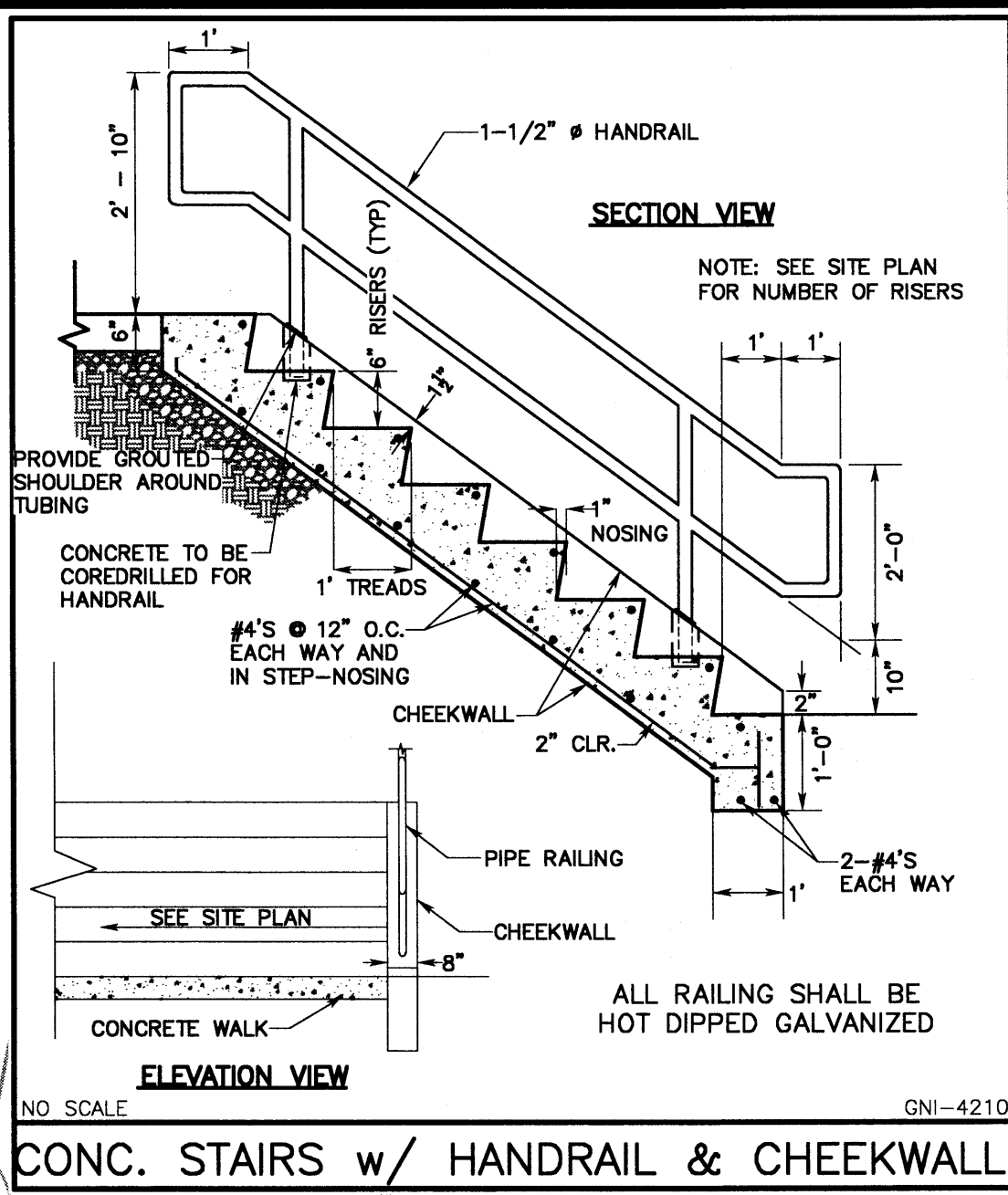
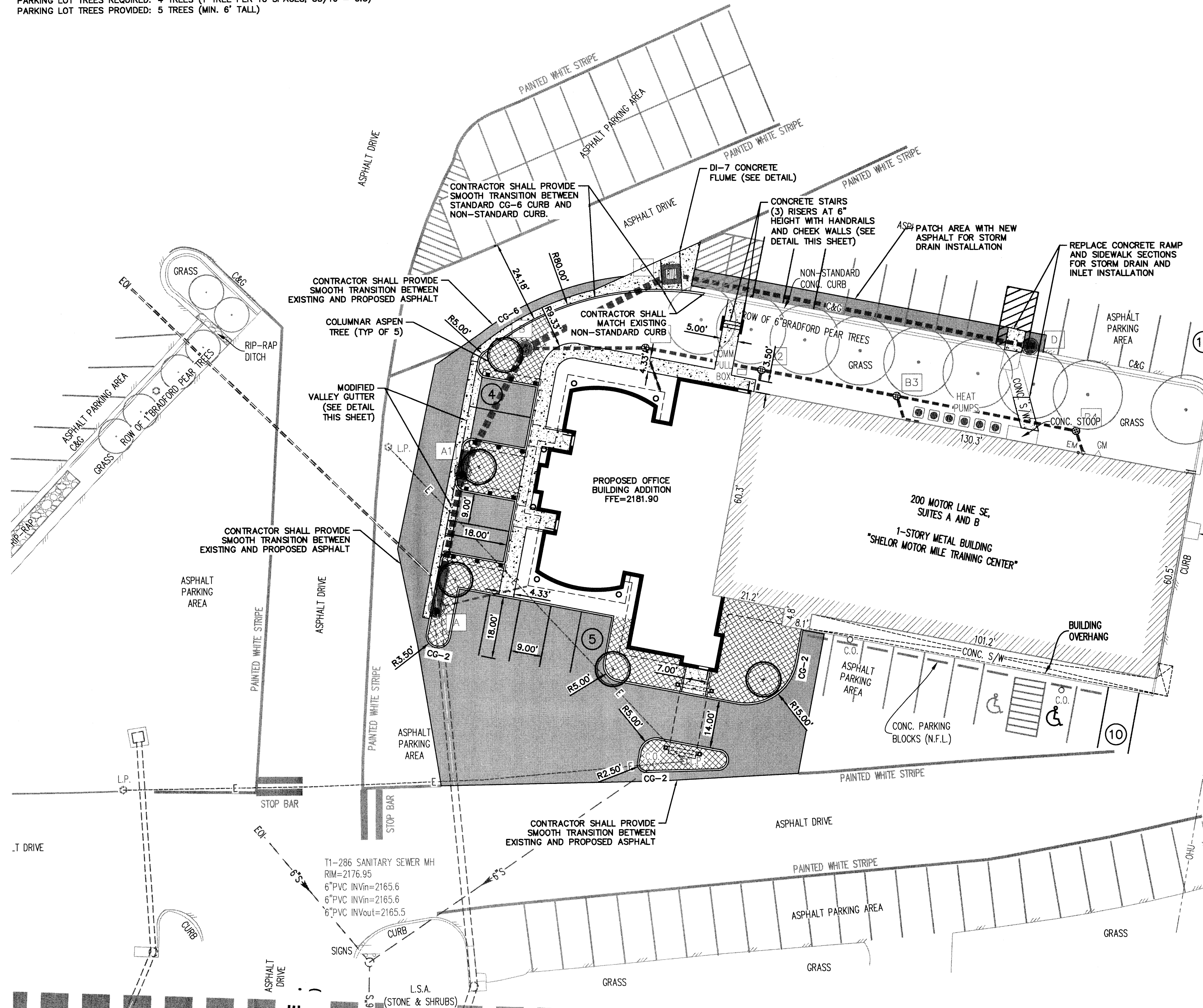


LANDSCAPING NOTES:

PARKING LOT GREEN SPACE REQUIRED: 1,320 SF (40 SF PER PARKING SPACE, 33x40 = 1,320)
 PARKING LOT GREEN SPACE PROVIDED: 1,828 SF
 PARKING LOT TREES REQUIRED: 4 TREES (1 TREE PER 10 SPACES, 33/10 = 3.3)
 PARKING LOT TREES PROVIDED: 5 TREES (MIN. 6' TALL)

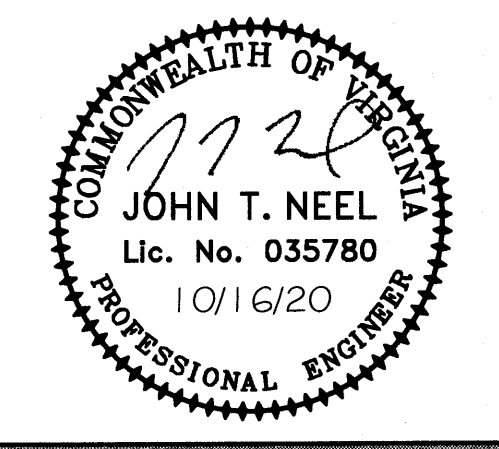


GAY AND NEEL, INC.
 ENGINEERING • LAND PLANNING • SURVEYING
 1260 Radford Street
 Christiansburg, Virginia 24073
 Phone: (540) 381-6011
 Fax: (540) 381-2773
 Email: info@gayandneel.com
 Web: www.gayandneel.com

The drawing, design, and digital files relating to this project are the property of Gay and Neel, Inc. The reproduction, copying, or other use of this drawing without GWI's written consent is prohibited.

**SHELOR EXECUTIVE OFFICE
 RENOVATIONS AND ADDITION
 200 MOTOR LANE SE, SUITES A & B**

TOWN OF CHRISTIANBURG, VIRGINIA



REVISIONS		
NO.	COMMENTS	DATE

PROJECT TEAM	
PIC	JOHN T. NEEL, PE
PM	MATTHEW P. TOMLINSON, PE
DESIGN	STC/MB/EMO
ISSUE DATE	
10/16/2020	
GNI JOB NO.	
3097	
SHEET TITLE	
SITE LAYOUT AND DIMENSION PLAN	
SHEET NUMBER	
C2-01	

APPROVED: Engineering *W. C. Neel* 11/5/2020 Date
 APPROVED: Planning *John T. Neel* 11/5/2020 Date

X:\Projects\3097\ENGINEERING\Design\Plan\Sheet\3097_Sht_C2_Site_Layout_Plan.dwg
 C2-01 SITE LAYOUT AND DIMENSION PLAN, 10/16/2020 1:09:55 PM, Scanlines, AutoCAD PDF (General Documentation).pc3, 11