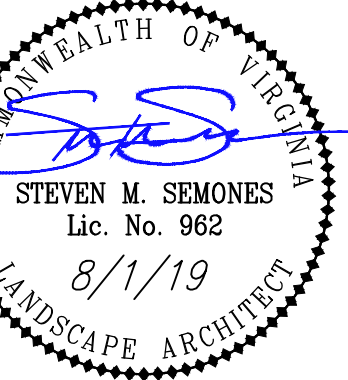




BALZER & ASSOCIATES
PLANNERS / ARCHITECTS
ENGINEERS / SURVEYORS

Roanoke / Richmond
New River Valley / Staunton
Harrisonburg / Lynchburg
www.balzer.cc
80 College Street
Suite H
Christiansburg, VA 24073
540.381.4290

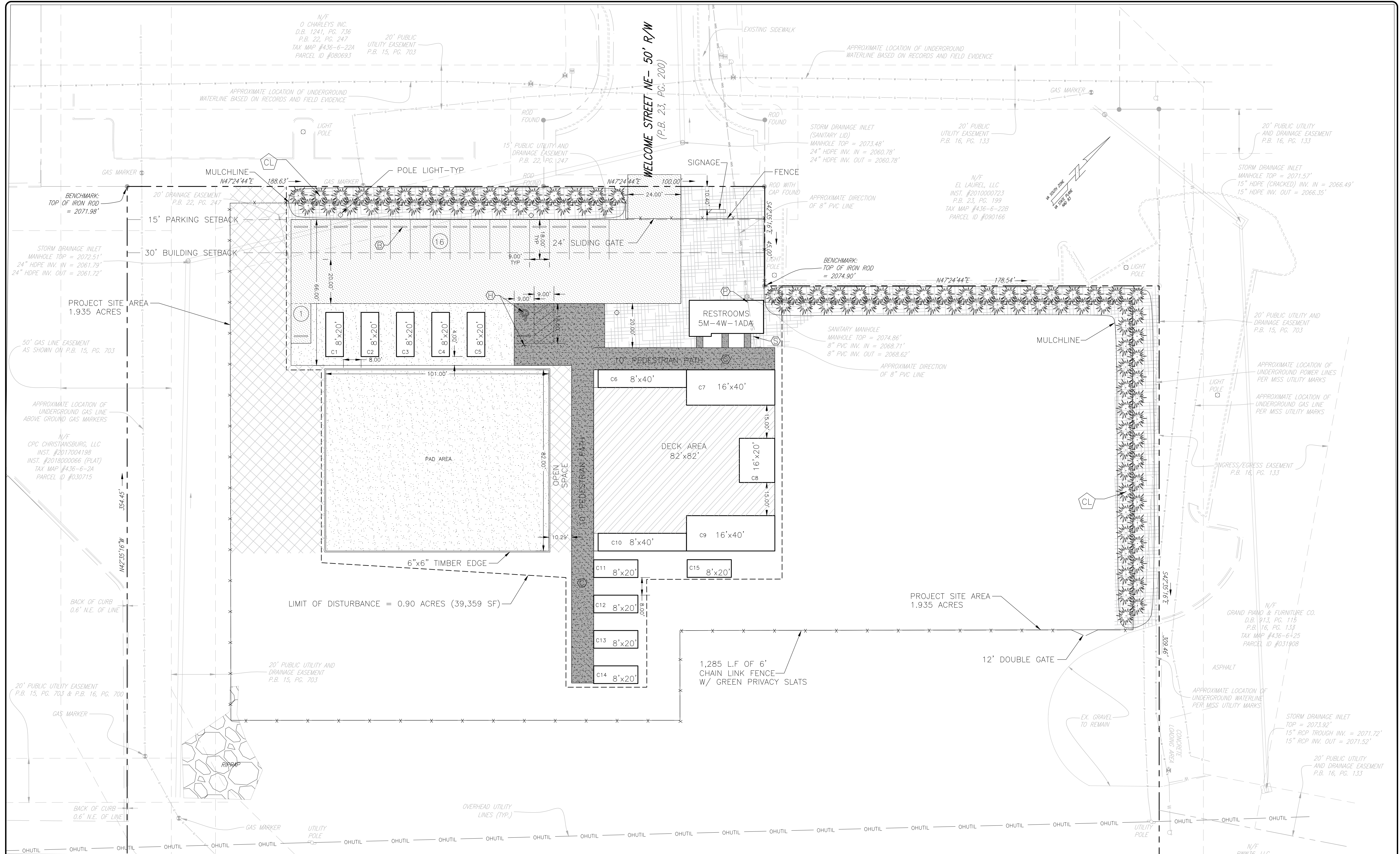


WING - CHRISTIANSBURG
LAYOUT, UTILITY & LANDSCAPE PLAN

TOWN OF CHRISTIANSBURG
MONTGOMERY COUNTY, VIRGINIA

DRAWN BY: SMS
DESIGNED BY: SMS
CHECKED BY: SMS
DATE: 08/01/2019
SCALE: 1"=20'
REVISIONS:

PROJECT NO. 24190076.00



LEGEND

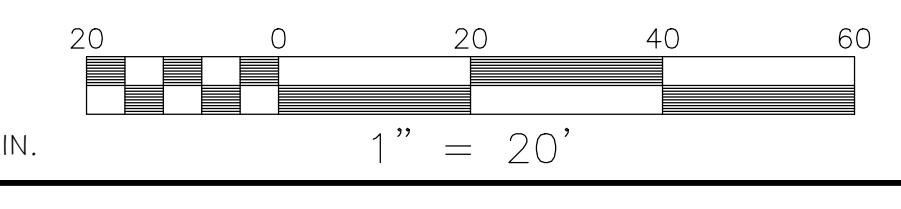
| | |
|-----------|-------------------------------------|
| (B) | PARKING BUMPER BLOCK |
| (C) | STONE DUST SIDEWALK |
| (H) | HANDICAP PARKING & SIGN |
| (P) | CONNECTION BY PLUMBER |
| (S) | SEWER LATERAL (SIZE AS NOTED) |
| — | TOWN OF CHRISTIANSBURG |
| — | UTILITY CONTRACTOR |
| X | EXISTING |
| [Pattern] | STONE DUST PARKING AREA & WALKWAYS |
| [Pattern] | COMPACTED GRAVEL PARKING LOT AREA |
| [Pattern] | GRAVEL AREA |
| [Pattern] | GREENSPACE AREA |
| [Pattern] | LANDSCAPE / MULCHED GREENSPACE AREA |

- LAYOUT PLAN NOTES**
- PAVEMENT FLOW LINE RADIUS OF 5' IS TYPICAL, WHERE NO FLOW LINE EXISTS, AN EDGE OF PAVEMENT RADIUS OF 5' IS TYPICAL.
 - ANY PAVEMENT OR SIDEWALK DISTURBED OR DESTROYED OUTSIDE OF THE LIMITS OF DISTURBANCE DURING THE CONSTRUCTION PROCESS SHALL BE REPLACED AS NECESSARY AT NO COST TO THE TOWN OR OFFSITE PROPERTY OWNERS.
 - SEE SIGNAGE PLAN BY OTHERS FOR EXACT SIZE AND HEIGHT OF SIGNS, INCLUDING BUILDING SIGNAGE. SIGNAGE SHALL BE PERMITTED SEPARATELY.
- PAVEMENT MARKING NOTES:**
- STANDARD PARKING STRIPING: SURFACES SHOULD BE CLEAN AND DRY STRIPING SHALL BE 4" WIDE, COLOR WHITE
 - HANDICAP PARKING STRIPING: SURFACES SHOULD BE CLEAN AND DRY STRIPING SHALL BE 4" WIDE, COLOR "HANDICAP BLUE"
 - HANDICAP SYMBOL: SURFACES SHOULD BE CLEAN AND DRY SYMBOL SHALL BE MIN. 36"x36" SIZE, COLOR "HANDICAP BLUE"
 - HATCHED ACCESS AISLES SHALL BE PAINTED COLOR "HANDICAP BLUE", WIDTH AS NOTED ON PLAN.

- UTILITIES PLAN NOTES**
- GENERAL CONTRACTOR SHALL CONFIRM THE LOCATION OF ALL EXISTING UTILITIES PRIOR TO ANY CONSTRUCTION OF PROPOSED IMPROVEMENTS.
 - THE G.C. IS RESPONSIBLE FOR PROVIDING AND INSTALLING ANY CONDUIT ASSOCIATED WITH REQUIRED UTILITIES FOR THE PROPOSED IMPROVEMENTS AND ANY NECESSARY UTILITIES ON-SITE SUCH AS LIGHTING, ELECTRICAL, CATV, ETC.
 - NO CONSTRUCTION/FIELD CHANGES WITHOUT THE APPROVAL OF THE CONSULTING ENGINEER, OWNER, AND THE TOWN OF CHRISTIANSBURG.

PLANT SCHEDULE

| TREES | CODE | QTY | BOTANICAL NAME / COMMON NAME | CONT | HT |
|----------|------|-----|---|-------|---------|
| [Symbol] | CL | 96 | Cupressocypans Leylandi / Leyland Cypress | B & B | 6' MIN. |



APPROVED: Engineering _____ Date _____

APPROVED: Planning _____ Date _____