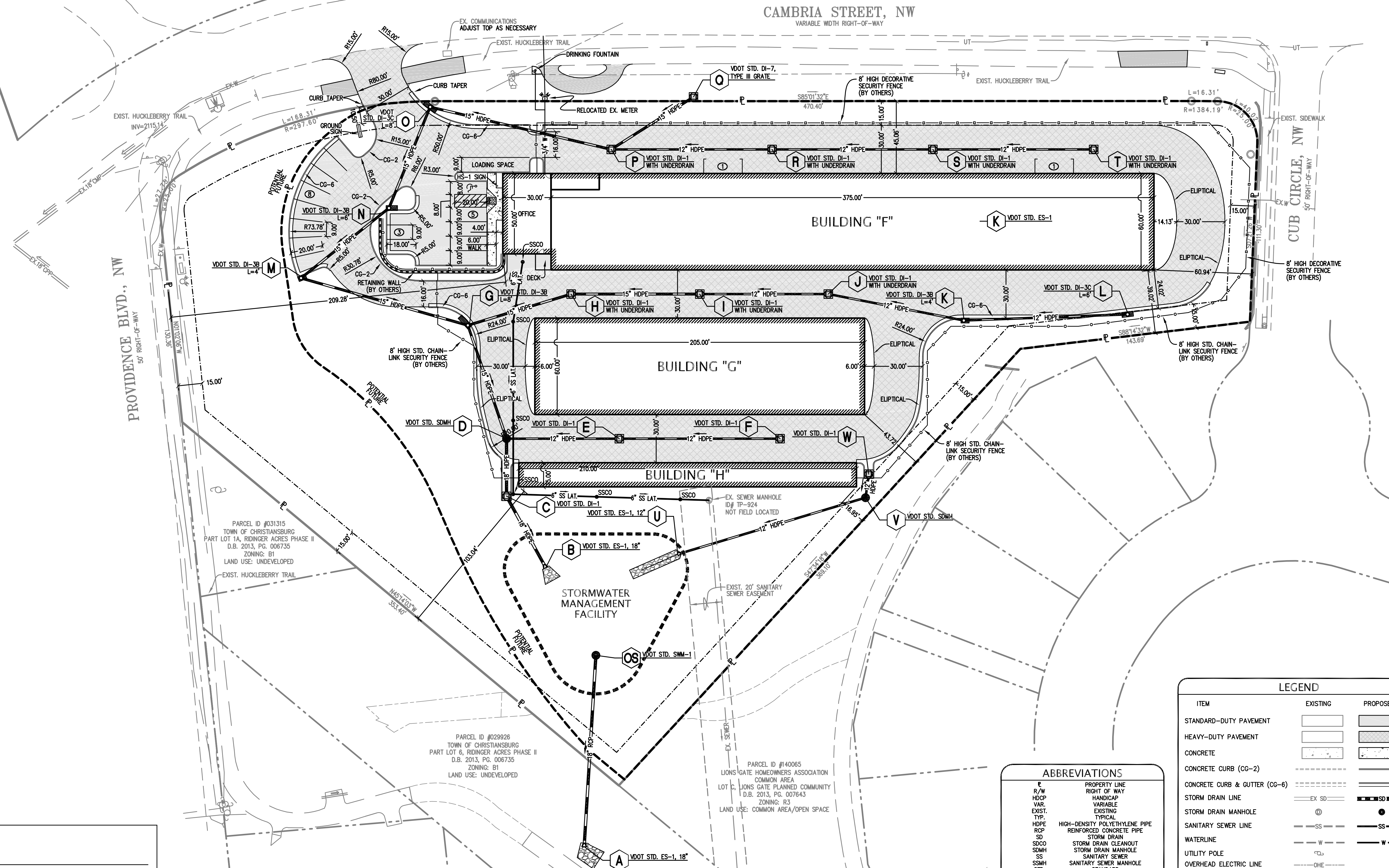
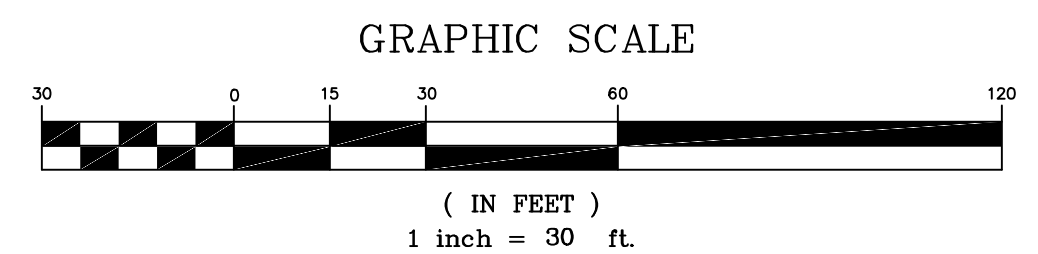


APPROVED: Engineering _____ Date _____

APPROVED: Planning _____ Date _____



PARCEL ID #031315
TOWN OF CHRISTIANBURG
PART LOT 1A, RIDINGER ACRES PHASE II
D.B. 2013, PG. 006735
ZONING: B1
LAND USE: UNDEVELOPED
EXIST. HUCKLEBERRY TRAIL

PARCEL ID #029926
TOWN OF CHRISTIANBURG
PART LOT 6, RIDINGER ACRES PHASE II
D.B. 2013, PG. 006735
ZONING: B1
LAND USE: UNDEVELOPED

PARCEL ID #14065
LIONS GATE HOMEOWNERS ASSOCIATION
COMMON AREA
LOT C, LIONS GATE PLANNED COMMUNITY
D.B. 2013, PG. 007643
ZONING: R3
LAND USE: COMMON AREA/OPEN SPACE

ABBREVIATIONS

R	PROPERTY LINE
R/W	RIGHT OF WAY
HDCP	HANDICAP
VAR.	VARIABLE
EXIST.	EXISTING
TYP.	TYPICAL
HDPE	HIGH-DENSITY POLYETHYLENE PIPE
RCP	REINFORCED CONCRETE PIPE
SD	STORM DRAIN
SDCO	STORM DRAIN CLEANOUT
SDMH	STORM DRAIN MANHOLE
SS	SANITARY SEWER
SSMH	SANITARY SEWER MANHOLE
STD.	STANDARD
W	WATER LINE
TC	TOP OF CURB
EP	EDGE OF PAVEMENT
RE	FIN ELEVATION
SP	SPOT ELEVATION
BW	BOTTOM OF WALL
TW	TOP OF WALL
CO	SANITARY SEWER CLEANOUT TO BE REMOVED
TBR	UNDERGROUND ELECTRIC
UE	UNDERGROUND ELECTRIC
UG	UNDERGROUND GAS

LEGEND

ITEM	EXISTING	PROPOSED
STANDARD-DUTY PAVEMENT	[Symbol]	[Symbol]
HEAVY-DUTY PAVEMENT	[Symbol]	[Symbol]
CONCRETE	[Symbol]	[Symbol]
CONCRETE CURB (CG-2)	[Symbol]	[Symbol]
CONCRETE CURB & GUTTER (CG-6)	[Symbol]	[Symbol]
STORM DRAIN LINE	[Symbol]	[Symbol]
STORM DRAIN MANHOLE	[Symbol]	[Symbol]
SANITARY SEWER LINE	[Symbol]	[Symbol]
WATERLINE	[Symbol]	[Symbol]
UTILITY POLE	[Symbol]	[Symbol]
OVERHEAD ELECTRIC LINE	[Symbol]	[Symbol]
OVERHEAD TELEPHONE LINE	[Symbol]	[Symbol]
INDEX CONTOURS	[Symbol]	[Symbol]
INTERMEDIATE CONTOURS	[Symbol]	[Symbol]
UNDERGROUND GAS	[Symbol]	[Symbol]
OVERHEAD ELECTRIC	[Symbol]	[Symbol]
SPOT ELEVATION	[Symbol]	[Symbol]

Lumsden Associates, P.C.
ENGINEERS | SURVEYORS | PLANNERS

4664 BRAMBLETON AVENUE
P.O. BOX 20669
ROANOKE, VIRGINIA 24018

PHONE: (540) 774-4411
FAX: (540) 772-9445
WWW.LUMSDENPC.COM

COMMONWEALTH OF VIRGINIA
HOWARD P. BOGGS, II
Lic. No. 000920
4/30/19
LANDSCAPE ARCHITECT

DIMENSIONAL LAYOUT

SITE DEVELOPMENT PLAN
FOR
CAMBRIA POINTE EXPANSION
PREPARED FOR
VIRGINIA VARSITY STORAGE, INC.
SITUATED AT 300 CAMBRIA STREET
TOWN OF CHRISTIANBURG, VIRGINIA

REVISIONS

NO.	DATE	DESCRIPTION

DATE: April 30, 2019
SCALE: 1" = 30'
COMMISSION NO: 18-252
SHEET 4 OF 13